



INTRODUCTION

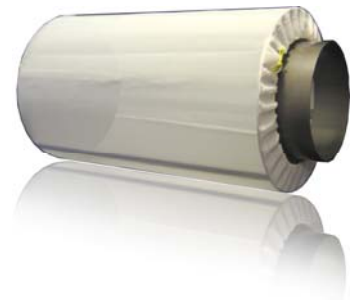
Congratulations! You've purchased an Agricultural Pollen Extractor 2.0. There's no better way to make all your favorite concentrated agricultural media. Now in as little as 30 minutes you can refine up to 160 grams of dried agricultural media.



1. READ ALL INSTRUCTIONS BEFORE USING.
2. To protect against electric shock, do not place cord, plug, or base of appliance in water or any other liquid.
3. Always unplug from outlet when not in use, before putting on and taking off parts, and before cleaning.
4. Avoid contact with moving parts. Keep hands, hair, clothing, as well as other utensils away during operation to reduce the risk of injury and/or damage to the unit.
5. Do not operate any machine with a damaged cord or plug, or after the appliance malfunctions, or is dropped or damaged in any manner. Please contact manufacturer in this case for examination, repair, electrical or mechanical adjustment.
6. Do not let cord hang over edge of table or counter, or touch hot surfaces.
7. DO NOT USE SHARP OBJECTS OR UTENSILS TO CLEAN SCREENS! Although mesh is very durable sharp objects will run a risk of snagging and tearing. A light finger tap on the screen while stretched tight around the barrel will loosen up any lodged material. Rubbing alcohol can also be used for resinous materials.
8. Never clean with unit with scouring powders or hard implements. Soap and water and a micro-fiber cloth are recommended. Rubbing alcohol can also be used for resinous materials.
9. Do not operate in conditions less than 32 degrees Fahrenheit.

SET UP AND USE

To prepare your Agricultural Pollen Extractor 2.0 for use, unpack tray and install handle with screws provided. Remove all packing material from the A.P.E. unit and take out barrel to install mesh. When installing mesh, hold just over edge with one hand and place in a circular direction with other hand, stretching as you go. May be very tight, if there is difficulty make sure the mesh is going around the barrel straight and evenly. Center mesh around barrel and tighten drawstrings while cinching evenly. If needed, tighten the first side again and tuck extra string between the mesh and the barrel. Now fill the barrel with 160g. of agricultural media (roughly 1/8 to 1/5 of the barrel to allow for proper agitation) and install cap. After ensuring cap is on securely barrel can be placed into the unit with the fill side resting on the wheels. ALWAYS make sure the bearing is pushed entirely over the black plunging set pin (right side) before turning on.



NOTE: Check that workspace is level. Barrel can fall from its plunging set pin in this case and damage tray. Always watch first run in a new workspace. *If workspace is not level* the placement of the plunging black set pin can be adjusted to compensate using two open ended wrenches to loosen.

NOTICE

This unit has a polarized plug (one blade is wider than the other). To reduce the risk of electric shock, this plug will fit into a polarized outlet one way. If the plug does not fit fully in the outlet, reverse the plug. If it still does not fit contact a qualified electrician. Do not attempt to defeat this safety feature.

BEFORE USING FOR THE FIRST TIME

DO NOT immerse entire unit in water. Wipe it with a moist cloth to remove any dust or residue from the manufacturing and shipping process. DO NOT clean any of the parts with abrasive cleaners or hard implements.

SOME BASIC POINTERS

- Leave out any large water leaf matter. It tends to crumble to a dust quickly, making it through the screen, and mixing with your desired extract.

- Make sure material is dry. If you desire to freeze it, use two bags to ensure no frost humidifies in the bag with the material. Freezing will help harden some resinous material, making it easier to break free and sift through.
- The less time spent agitating in the barrel the more concentrated the end product. Play with the run times to decide how you would like to separate your desired concentrate levels. Try 30 minutes as the first interval collecting and storing separately. Run for another 2-3-4 hours, and then another 6-8 hours. Time spent tumbling will eventually start to break down the parent material, making it small enough to sift through and mix with what you are intending to separate. A good way to tell your parent material is getting into the desired concentrate is color.
- The screen mesh size should be changed to outfit the unit to work more productively with different varieties. Once the mesh size is determined (best way = trial and error) that same screen should be used for all levels of quality in the variety. The time the material spends tumbling will determine the levels of concentration.
- If undesired hair or pet dander is in your concentrated media it can be quickly sifted out using a flour sifter before storing.

SOME GREAT CRAFT IDEAS

Your garden may be good enough to smoke or eat, but those tantalizing fragrances can be put to use on many other senses also! Cured flowers and herbs tucked into bags and pillows have a fragrance that will let you reminisce about the glory days of your garden. Flowers and herbs, especially their pollen, hold on to their fragrance. Use your sachets to scent a drawer, the clothes in the dryer or tuck one under your pillow. They make great gifts too.

Here's How:



Select or make a small bag with a somewhat tight weave. Be sure to leave one side open, if you are making bags.

1. Mix together dried herbs to use in your Agricultural Pollen Extractor.
2. Collect your concentrated media.
3. If you'd like to enhance the scent, a few drops of essential oil can be added.
4. Fill the bag with a concentrated media-dried herb and flower mix.
5. Either sew or glue the bag closed, or tie the end tightly with ribbon or string.
6. Enjoy. Rubbing the bag gently will disturb the concentrated media and release their fragrance.

Tips:

- Good choices for sachets: roses, lavender, lemon balm, lilac, mint, rosemary, scented geraniums and thyme.
- You can enjoy your sachets in the bath too. Just let them float or tie a string just long enough to anchor them under the faucet.
- Holiday and seasonal fabrics help turn this simple sachet into a thoughtful gift.

Variation: Other herbs that are good for repelling moths include lavender, lemon, sweet woodruff, and tansy.

Moth-Repellent Sachets

- 2/3 of a cup of orris root powder
- 2 cups loosely packed shredded vetiver root
- 2/3 of a cup of ground cloves
- 2 cups dried rose petals
- 2 cups dried lavender powder
- 1 cup cedar powder

WARRANTY

TWO-YEAR LIMITED WARRANTY

DAC Solutions Ltd. makes every effort to ensure that its products meet superior quality and durability standards, and warrants to the consumer that this product is free from defects in materials and workmanship for the period of two years from the date of purchase. This warranty does not apply to damage due directly or indirectly to misuse, abuse, negligence or accidents; including repairs or alterations outside our facilities.